

KYOWA PRODUCT CATALOGUE



*We are focusing on the atmospheric future
with technology.*



KYOWA KAKO Co., Ltd.



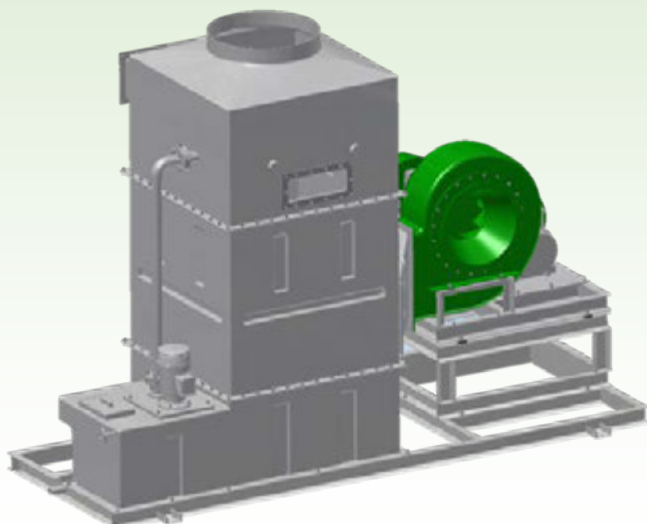
"Eco-MEVIUS" is not only economical but also ecological product development concept proposed by KYOWA KAKO Co., Ltd.



【CONTENTS】

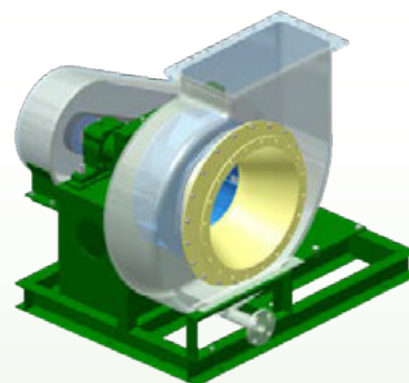
1. SCRUBBER

FSD II and EMS II . . . P.1



2. CORROSION RESISTANT FAN

RFT-RB (BELT DRIVE TYPE) . . . P.5
RFT-OA (DIRECT DRIVE TYPE) . . . P.11
NKS II -RB (BELT DRIVE TYPE) . . . P.15
NKS II -O (DIRECT DRIVE TYPE) . . . P.17



3. CORROSION RESISTANT PUMP

VO series . . . P.19

4. MAINTENANCE

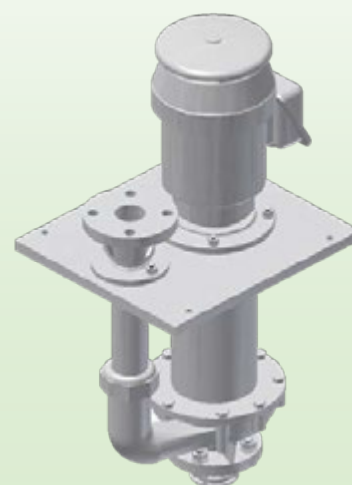
. . . P.21

5. OPTION PARTS

. . . P.22

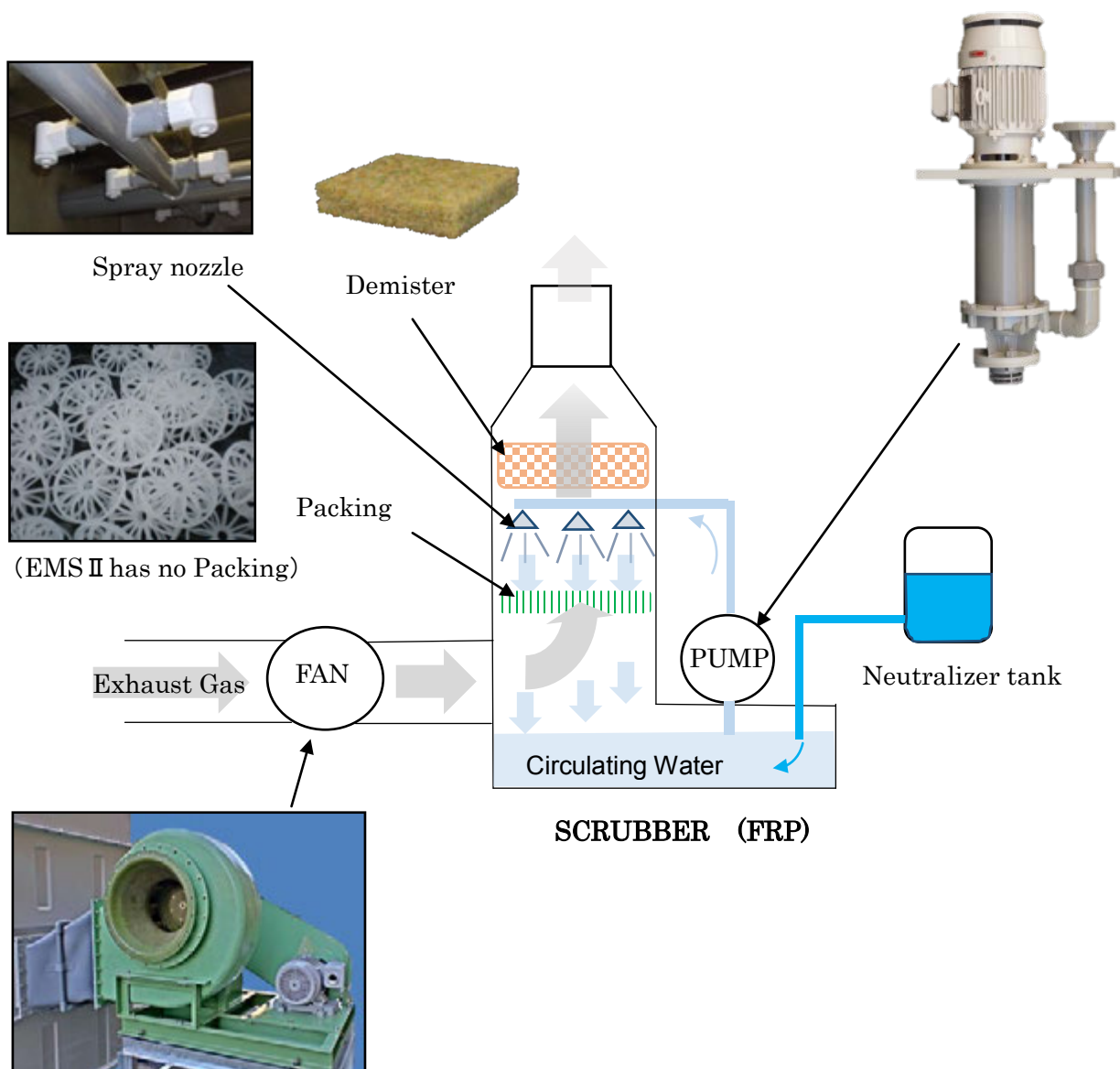
6. OTHER EQUIPMENT

. . . P.23





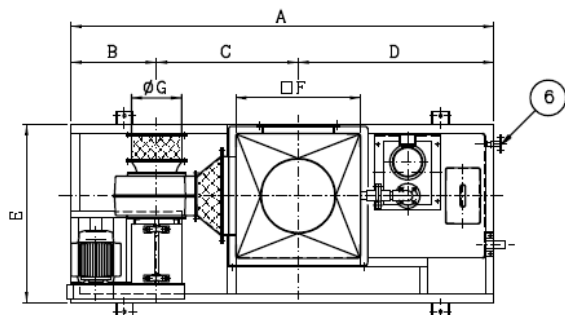
TYPE *FSD II and EMS II*



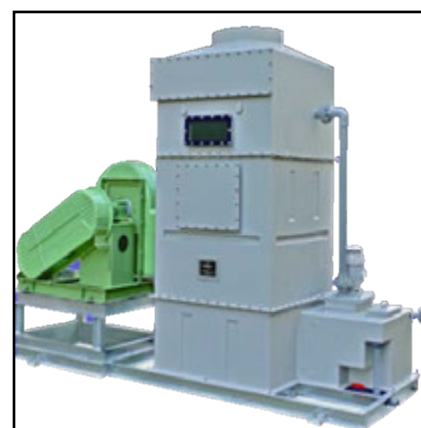
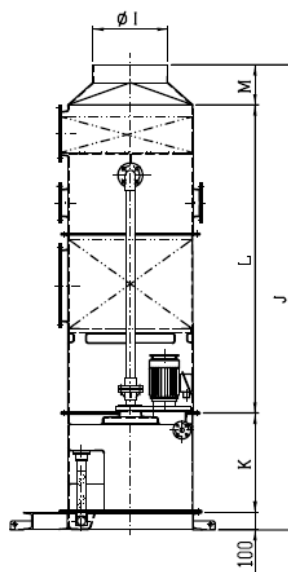
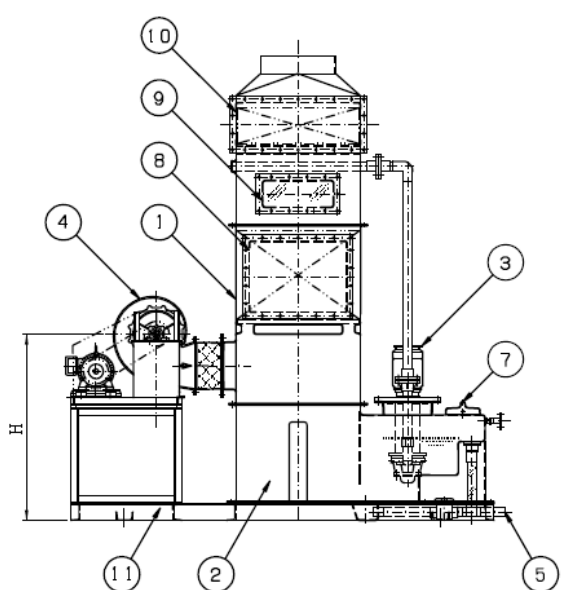
Removal efficiency

		Elimination rate for each gas	
		HCl	NH ₃
FSD II -0.5L	Packing Height 0.5m	90% (H ₂ O)	—
		95% (NaOH)	90% (H ₂ SO ₄)
FSD II -1.0L	Packing Height 1.0m	95% (H ₂ O)	—
		98% (NaOH)	95% (H ₂ SO ₄)
EMS II -1.0L	Non Packing TYPE	70% (H ₂ O)	—
		80% (NaOH)	75% (H ₂ SO ₄)

TYPE FSD II -55-0.5L~FSD II -115-0.5L



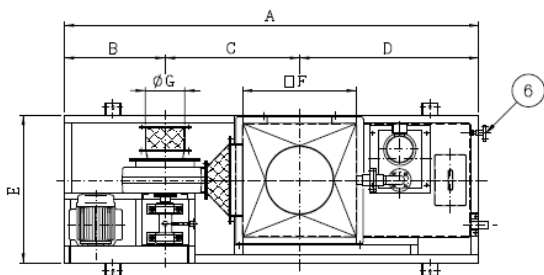
NO.	DESCRIPTION	MATERIAL	QUANT	RAMARKS
1	SCRUBBER	FRP	1	
2	CIRCULATION TANK	FRP	1	
3	CIRCULATION PUMP	PVC	1	
4	EXHAUST FAN	FRRP/ FRP	1	
5	OVERFLOW -DRAIN	PVC	1	40A
6	WATER SUPPLY PORT	PVC	1	20A JIS10K
7	INSPECTION PORT FOR TANK	FRP	1	
8	INSPECTION PORT FOR PACKING	FRP	1	
9	INSPECTION PORT FOR PACKING NOZZLE	PVC	2	
10	INSPECTION PORT FOR DEMISTER	FRP	1	
11	COMMON BASE	SS400+Zn	1	



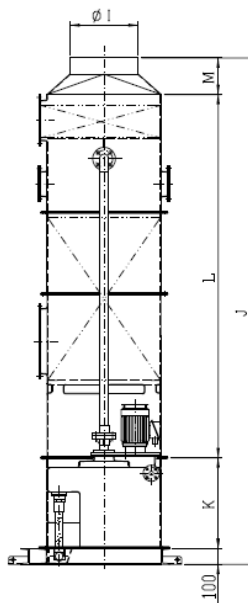
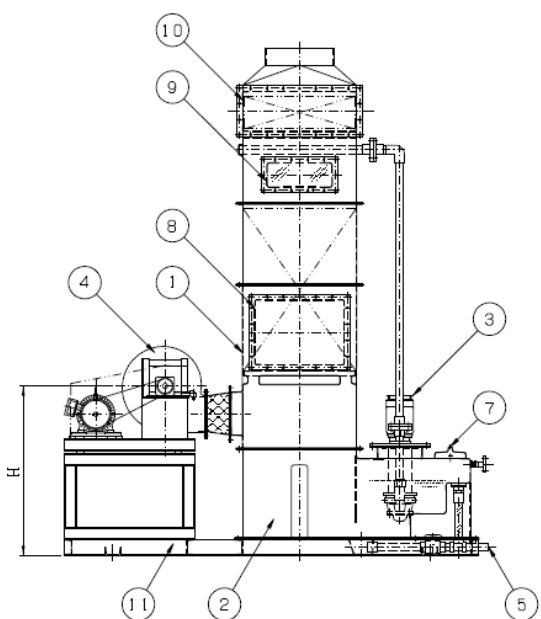
TYPE	A	B	C	D	E	□F	φG	H	φI	J	K	L	M
FSD II -55-0.5L	2145	430	690	1025	850	550	216	975	318	2510	555	1630	225
FSD II -70-0.5L	2375	480	795	1100	1000	700	286	1050	420	2610	555	1730	225
FSD II -85-0.5L	2810	565	1070	1175	1225	850	375	1105	470	2650	555	1730	265
FSD II -100-0.5L	2960	565	1145	1250	1290	1000	375	1090	612	2650	555	1775	220
FSD II -115-0.5L	3595	900	1320	1375	1330	1150	470	1267	660	2650	555	1775	220

TYPE	CAPACITY (m3/min)	EXHAUST FAN SPECIFICATION			CIRCULATION PUMP SPECIFICATION				CIRCULATION TANK CAPACITY (ℓ)	WATER SUPPLY (ℓ/min)	EXTERNAL STATIC PRESSURE (Pa)	TOTAL WEIGHT (kg)	RUNNING WEIGHT (kg)
		TYPE	POWER (kW)	STATIC PRESSURE (Pa)	TYPE	CAPACITY (ℓ/min)	POWER (kW)	TOTAL HEAD (m)					
FSD II -55-0.5L	15~35	100NKS II -RB	1.5	750	25V03	55	0.4	8	240	3	450	270	520
FSD II -70-0.5L	36~55	150NKS II -RB	2.2	750	40V03	90	0.75	8	340	5	450	320	690
FSD II -85-0.5L	56~80	200NKS II -RB	2.2	750	40V03	130	0.75	8	420	8	450	410	870
FSD II -100-0.5L	81~115	200NKS II -RB	3.7	750	40V03	180	0.75 (50Hz) 1.5 (60Hz)	8	520	11	450	500	1050
FSD II -115-0.5L	116~150	#3RFT-RB	5.5	750	50V03	240	1.5	8	650	15	450	830	1520

TYPE FSD II -55-1.0L~FSD II -115-1.0L



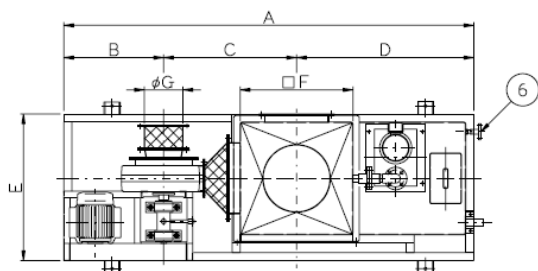
NO.	DESCRIPTION	MATERIAL	QUANT	RAMARKS
1	SCRUBBER	FRP	1	
2	CIRCULATION TANK	FRP	1	
3	CIRCULATION PUMP	PVC	1	
4	EXHAUST FAN	FRPP / FRP	1	
5	OVERFLOW-DRAIN	PVC	1	40A
6	WATER SUPPLY PORT	PVC	1	20A JIS10K
7	INSPECTION PORT FOR TANK	FRP	1	
8	INSPECTION PORT FOR PACKING	FRP	1	
9	INSPECTION PORT FOR PACKING NOZZLE	PVC	2	
10	INSPECTION PORT FOR DEMISTER	FRP	1	
11	COMMON BASE	SS400+Zn	1	



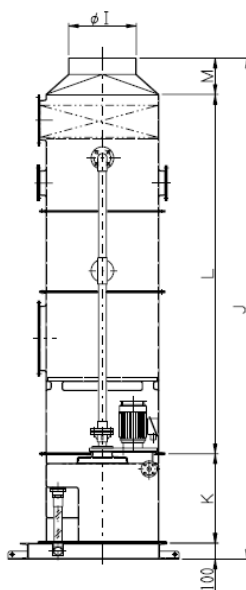
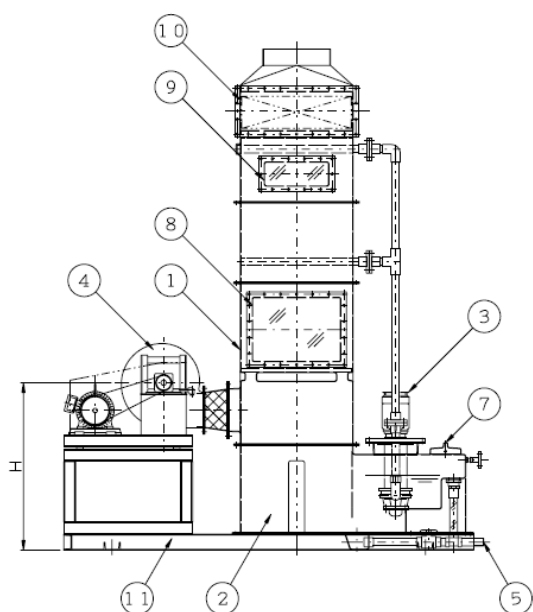
TYPE	A	B	C	D	E	□F	φ G	H	φ I	J	K	L	M
FSD II -55-1.0L	2145	430	690	1025	850	550	216	975	318	3010	555	2130	225
FSD II -70-1.0L	2375	480	795	1100	1000	700	286	1050	420	3110	555	2230	225
FSD II -85-1.0L	2810	565	1070	1175	1175	850	375	1105	470	3150	555	2230	265
FSD II -100-1.0L	2960	565	1145	1250	1290	1000	375	1090	612	3150	555	2275	220
FSD II -115-1.0L	3595	900	1320	1375	1330	1150	470	1267	660	3150	555	2275	220

TYPE	CAPACITY (m3/min)	EXHAUST FAN SPECIFICATION			CIRCULATION PUMP SPECIFICATION				CIRCULATION TANK CAPACITY (ℓ)	WATER SUPPLY (ℓ/min)	EXTERNAL STATIC PRESSURE (Pa)	TOTAL WEIGHT (kg)	RUNNING WEIGHT (kg)
		TYPE	POWER (kW)	STATIC PRESSURE (Pa)	TYPE	CAPACITY (ℓ/min)	POWER (kW)	TOTAL HEAD (m)					
FSD II -55-1.0L	15~35	100NKS II -RB	1.5	850	25V03	55	0.4	8	240	3	450	290	550
FSD II -70-1.0L	36~55	150NKS II -RB	2.2	850	40V03	90	0.75	8	340	5	450	370	740
FSD II -85-1.0L	56~80	200KST -RB	2.2	850	40V03	130	0.75	8	420	8	450	510	970
FSD II -100-1.0L	81~115	200NKS II -RB	3.7	850	40V03	180	0.75 (50Hz) 1.5 (60Hz)	8	520	11	450	560	1130
FSD II -115-1.0L	116~150	#3RFT -RB	5.5	850	50V03	240	1.5	8	650	15	450	910	1630

TYPE EMS II -55-1.0L~EMS II -115-1.0L



NO.	DESCRIPTION	MATERIAL	QUANT	RAMARKS
1	SCRUBBER	FRP	1	
2	CIRCULATION TANK	FRP	1	
3	CIRCULATION PUMP	PVC	1	
4	EXHAUST FAN	FRPP/FRP	1	
5	OVERFLOW-DRAIN	PVC	1	40A
6	WATER SUPPLY PORT	PVC	1	20A JIS10K
7	INSPECTION PORT FOR TANK	FRP	1	
8	INSPECTION PORT-A FOR SPRAY NOZZLE	FRP	1	
9	INSPECTION PORT-B FOR SPRAY NOZZLE	PVC	2	
10	INSPECTION PORT FOR DEMISTER	FRP	1	
11	COMMON BASE	SS400+Zn	1	



TYPE	A	B	C	D	E	□F	φG	H	φI	J	K	L	M
EMS II -55-1.0L	2225	480	720	1025	925	550	286	1049	318	3010	555	2130	225
EMS II -70-1.0L	2560	565	895	1100	1130	700	375	1105	420	3110	555	2230	225
EMS II -85-1.0L	3245	900	1170	1175	1180	850	470	1290	470	3150	555	2230	265
EMS II -100-1.0L	3395	900	1245	1250	1255	1000	470	1267	612	3150	555	2275	220
EMS II -115-1.0L	3595	900	1320	1375	1330	1150	470	1267	660	3150	555	2275	220

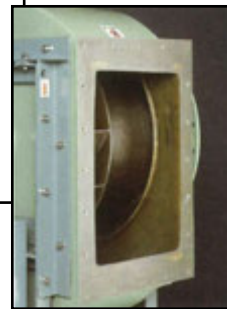
TYPE	CAPACITY (m3/min)	EXHAUST FAN SPECIFICATION			CIRCULATION PUMP SPECIFICATION				CIRCULATION TANK CAPACITY (ℓ)	WATER SUPPLY (ℓ/min)	EXTERNAL STATIC PRESSURE (Pa)	TOTAL WEIGHT (kg)	RUNNING WEIGHT (kg)
		TYPE	POWER (kW)	STATIC PRESSURE (Pa)	TYPE	CAPACITY (ℓ/min)	POWER (kW)	TOTAL HEAD (m)					
EMS II -55-1.0L	20~50	150NSK II -RB	2.2	800	40V03	80	0.75	10	240	5	450	290	530
EMS II -70-1.0L	51~80	200NKS II -RB	3.7	800	40V03	125	0.75	10	340	8	450	400	740
EMS II -85-1.0L	81~120	#3RFT-RB	3.7	800	50V03	185	1.5	10	420	12	450	670	1090
EMS II -100-1.0L	121~165	#3RFT-RB	5.5	800	50V03	250	1.5	10	520	16	450	910	1430
EMS II -115-1.0L	166~220	#3RFT-RB	11	800	50V03	335	1.5	10	650	22	450	980	1630



TYPE RFT-RB



- The RFT-RB is made from FRP, this fan is durable to against corrosive gases.
- The RFT-RB coordinates rotational speed with belt drive to adjust required performance, making it economical to operate.
- This design makes this fan highly efficient, and reduces noise.



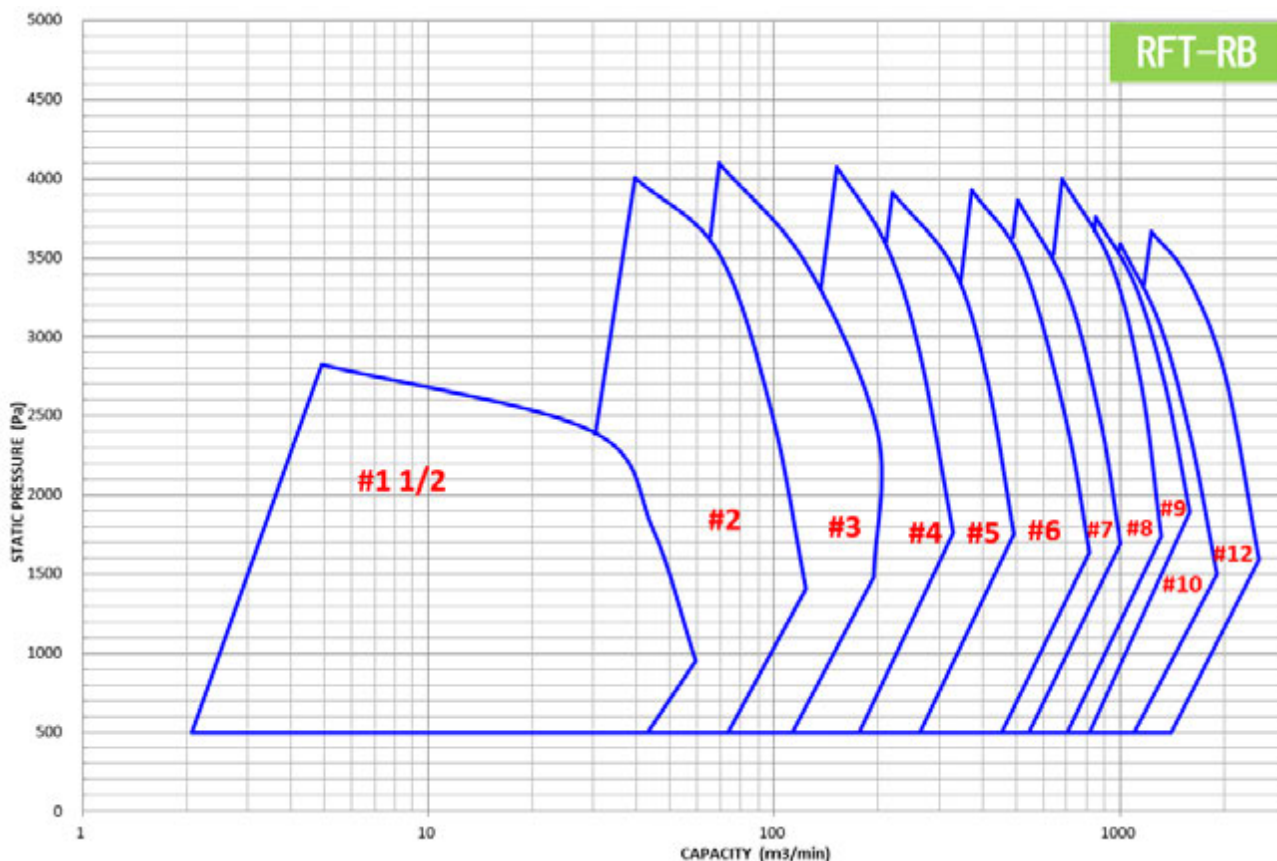
#4~12RFT-RB

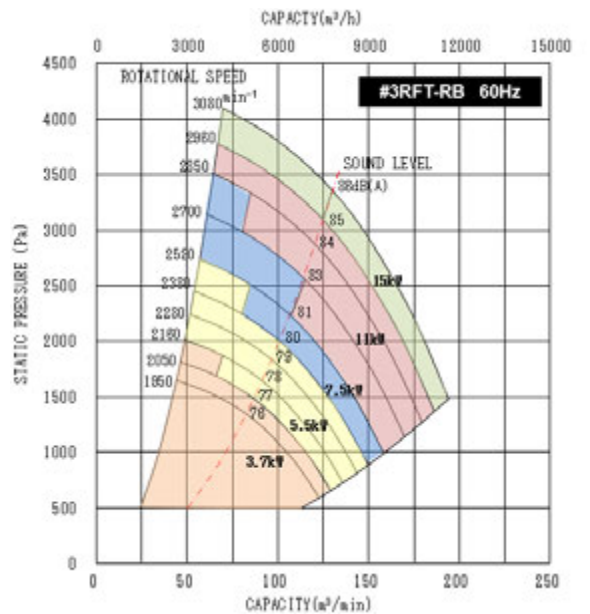
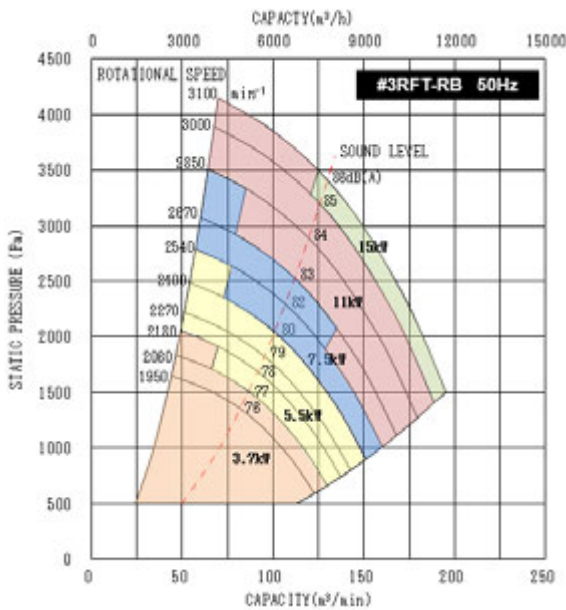
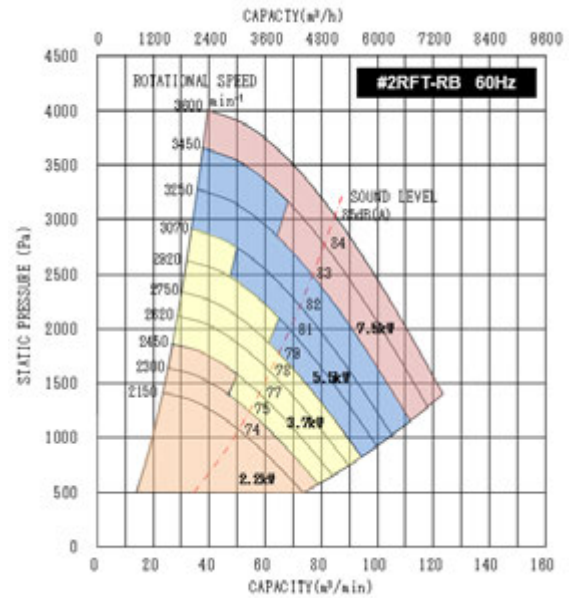
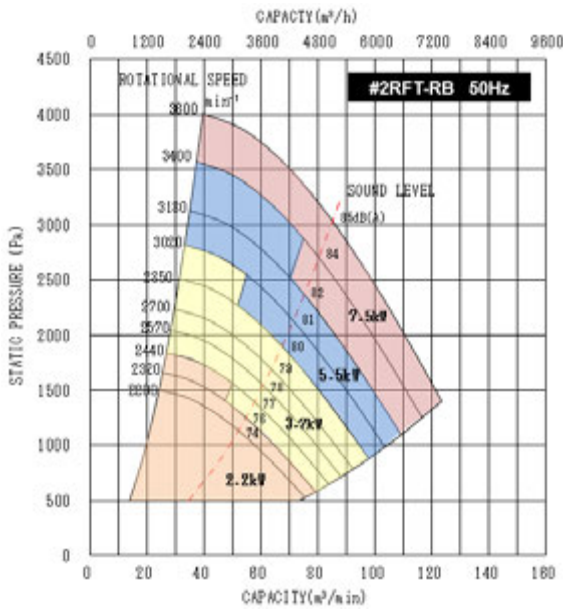
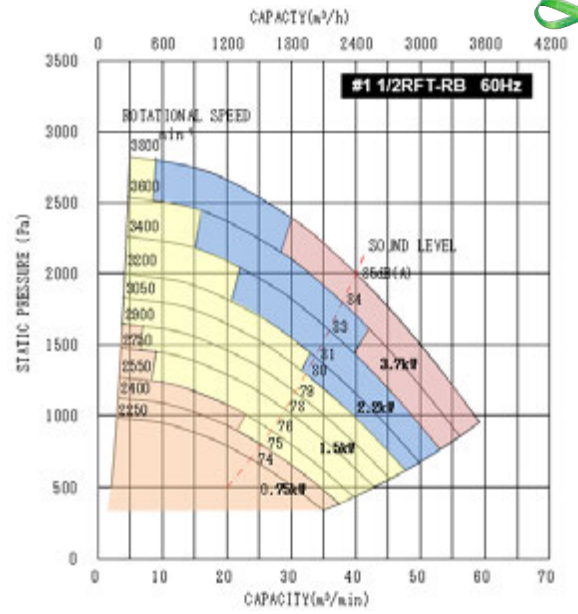
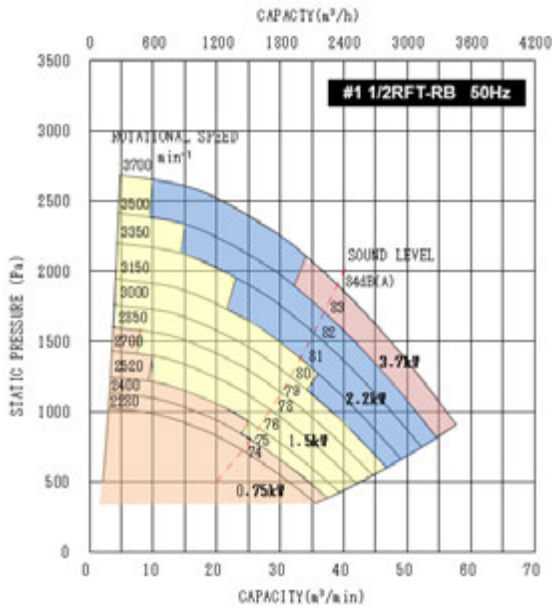
Large size inspection door.

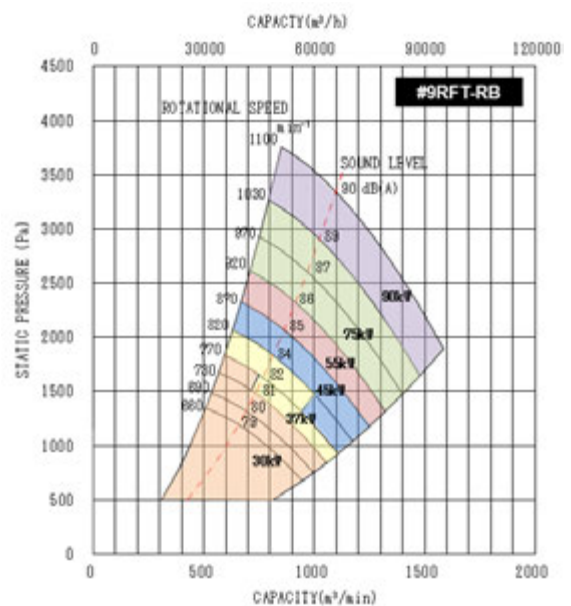
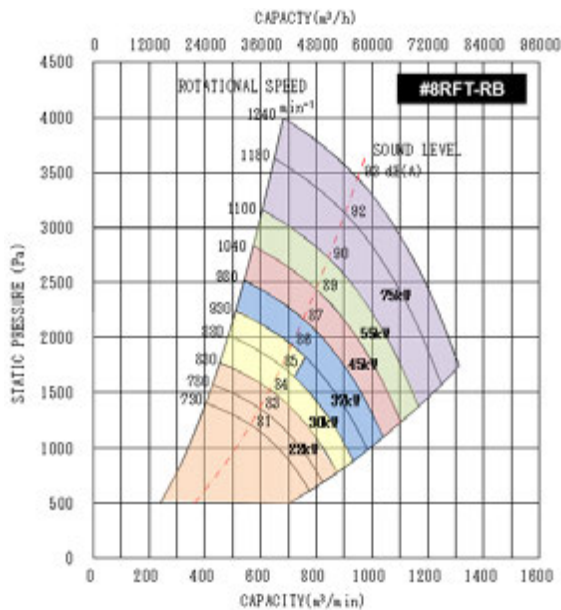
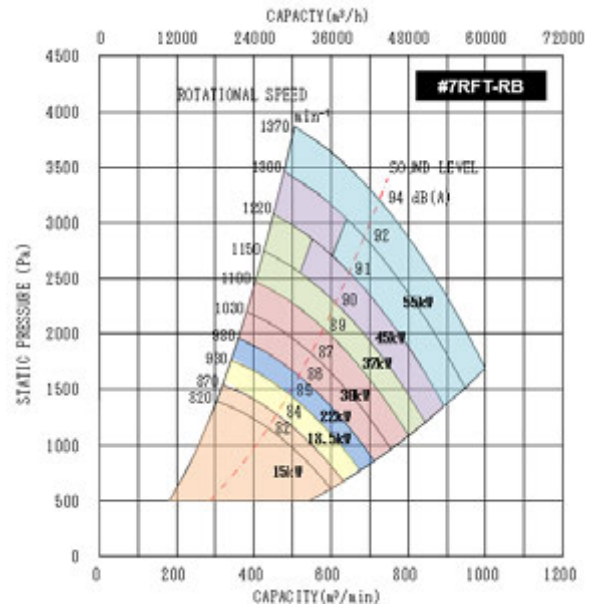
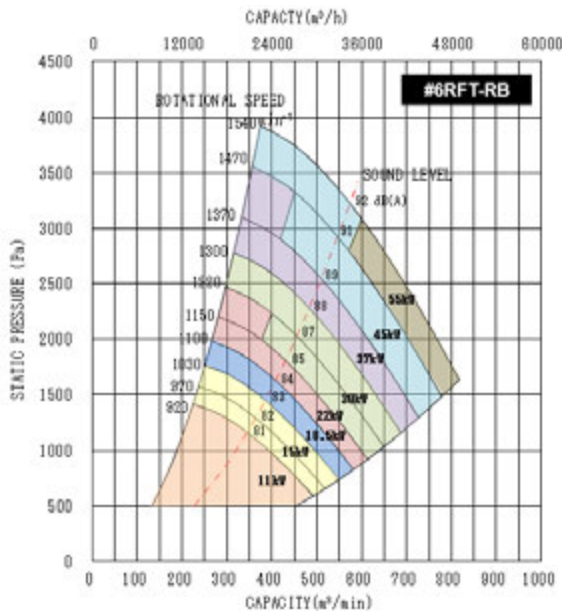
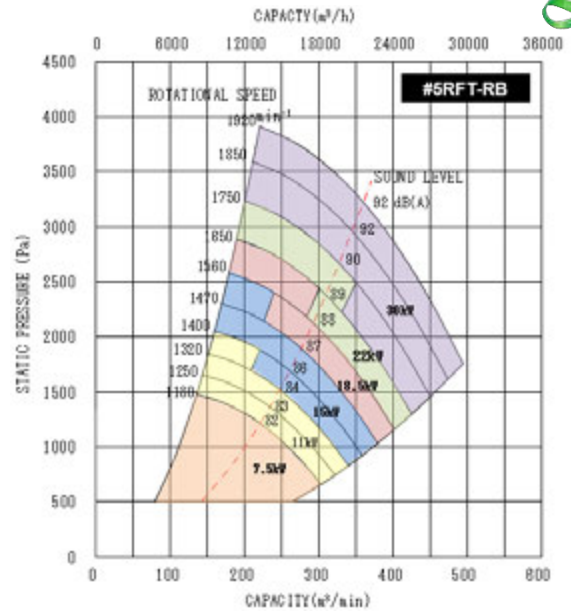
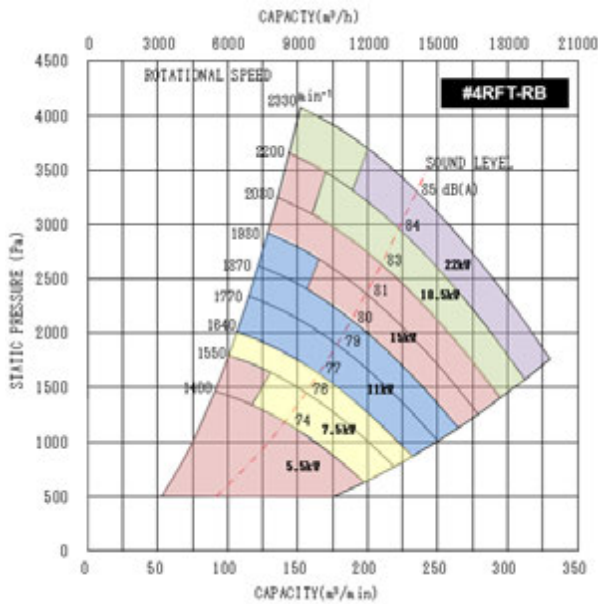
■ SPECIFICATIONS

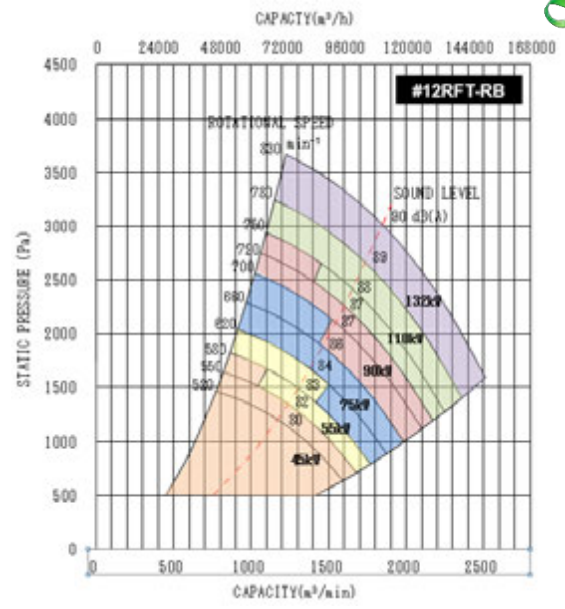
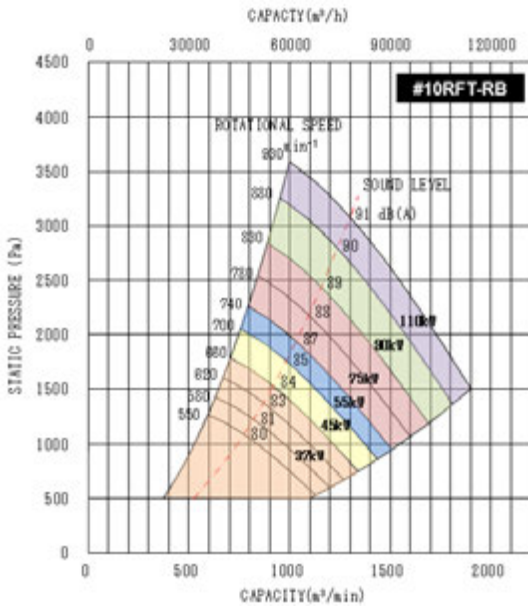
- ① Centrifugal turbo fan
- ② Suction Gas temperature limits $-10\sim 70^{\circ}\text{C}$
- ③ Shaft seal is gland sheet type
- ④ Bearing
 - #1 1/2RFT-RB~#3RFT-RB · · · Oil bath bearing unit
 - #4RFT-RB~#9RFT-RB · · · Pillow block bearing unit
 - #10RFT-RB~#12RFT-RB · · · Oil bath bearing unit

■ PERFORMANCE CURVE



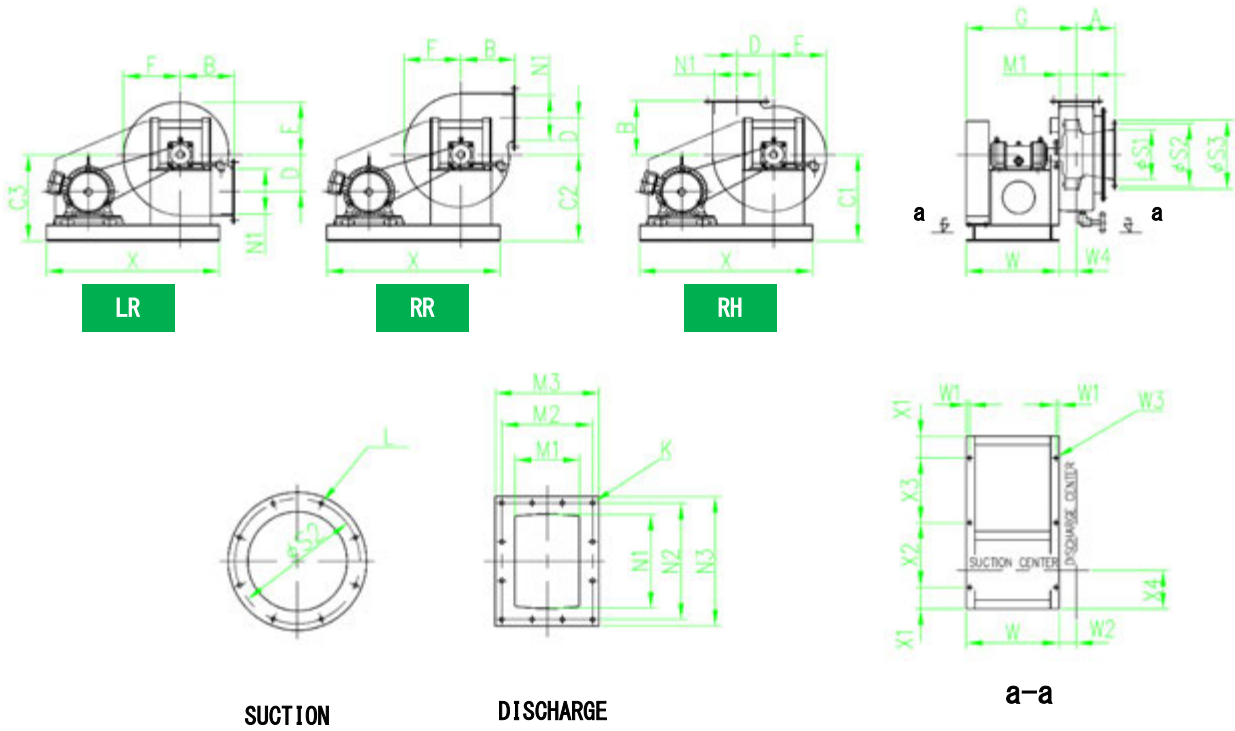








■ DIMENSIONS (#1 1/2~#2RFT-RB)

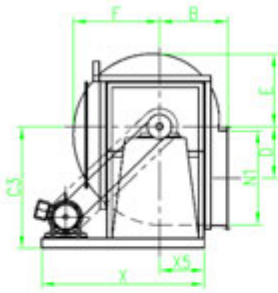


FAN	MAIN UNIT									SUCTION				DISCHARGE						
	A	B	C1	C2	C3	D	E	F	G	S1	S2	S3	L	M1	M2	M3	N1	N2	N3	K
#1 1/2RFT-RB	180	250	400	400	400	170	245	265	510	230	290	320	8- ϕ 10	150	210	240	210	270	300	12- ϕ 10
#2RFT-RB	250	300	480	480	520	235	300	340	560	320	374	410	12- ϕ 10	220	272	310	270	324	360	16- ϕ 10

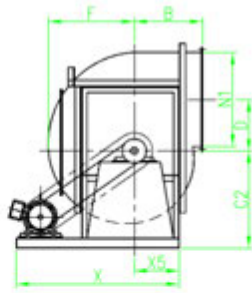
FAN	BASE									WEIGHT (kg)
	W	W1	W2	W3	X	X1	X2	X3	X4	
#1 1/2RFT-RB	430	15	79	4- ϕ 14	800	100	600	-	180	80
#2RFT-RB	515	15	44	4- ϕ 14	930	100	365	365	185	120



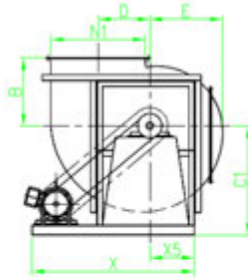
■ DIMENSIONS (#3~#9RFT-RB)



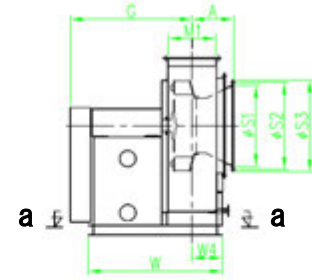
LR



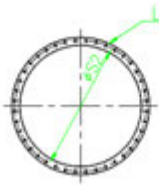
RR



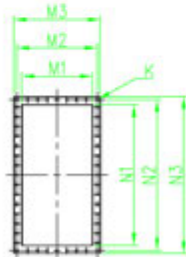
RH



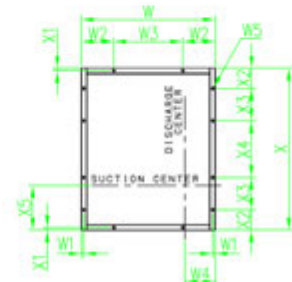
a-a



SUCTION



DISCHARGE



FAN	MAIN UNIT									SUCTION				DISCHARGE						
	A	B	C1	C2	C3	D	E	F	G	S1	S2	S3	L	M1	M2	M3	N1	N2	N3	K
#3RFT-RB	250	420	650	600	700	275	410	480	705	465	520	550	20-φ12	260	320	350	538	600	630	24-φ12
#4RFT-RB	365	475	800	700	900	355	505	595	980	570	640	680	24-φ15	330	400	440	660	730	770	28-φ15
#5RFT-RB	410	600	1000	850	1100	450	640	760	1150	720	790	830	32-φ15	420	490	530	840	910	950	34-φ15
#6RFT-RB	460	750	1200	1050	1350	565	800	945	1420	900	980	1030	36-φ15	520	600	650	1040	1120	1170	44-φ15
#7RFT-RB	510	840	1350	1200	1500	635	895	1060	1500	1000	1080	1130	40-φ15	580	660	710	1160	1240	1290	48-φ15
#8RFT-RB	565	940	1400	1250	1650	709	1000	1185	1520	1120	1200	1250	52-φ15	650	730	780	1300	1380	1430	52-φ15
#9RFT-RB	625	1050	1600	1400	1850	790	1120	1325	1580	1260	1360	1410	52-φ15	730	830	880	1460	1560	1610	62-φ15
#10RFT-RB	695	1200	1900	1650	2100	910	1380	1595	1650	1440	1540	1590	60-φ15	830	930	980	1660	1760	1810	68-φ15
#12RFT-RB	770	1350	2050	1800	2200	1017	1520	1790	1720	1620	1720	1770	64-φ15	940	1040	1090	1880	1980	2030	70-φ15

FAN	BASE												WEIGHT (kg)
	W	W1	W2	W3	W4	W5	X	X1	X2	X3	X4	X5	
#3RFT-RB	900	20	450	-	195	6-φ18	1150	20	150	850	-	250	220
#4RFT-RB	1040	20	520	-	234	8-φ18	1300	20	150	500	500	275	330
#5RFT-RB	1280	30	640	-	294	8-φ22	1400	30	200	500	500	350	500
#6RFT-RB	1575	30	787.5	-	343	8-φ22	1750	30	250	625	625	475	690
#7RFT-RB	1650	30	400	850	372	10-φ22	2000	30	250	750	750	550	950
#8RFT-RB	1760	30	450	860	422	12-φ26	2350	30	200	650	650	600	1800
#9RFT-RB	1875	30	500	875	475	12-φ26	2600	30	250	700	700	650	2000
#10RFT-RB	2010	40	600	810	555	12-φ26	2950	40	275	800	800	850	3200
#12RFT-RB	2140	40	600	940	610	12-φ26	3200	40	250	900	900	1000	3700

kW	MOTOR WEIGHT (kg)			
	2P	4P	6P	8P
0.75	14	18	21	34
1.5	22	25	38	50
2.2	26	33	50	70
3.7	38	45	66	90
5.5	62	67	82	120
7.5	65	80	106	152
11	105	115	130	185
15	115	130	190	235
18.5	130	200	235	290
22	210	205	250	320
30	255	255	365	380
37	350	355	370	-
45	360	390	440	-
55	425	455	-	-
75	-	-	-	-
90	-	-	-	-



TYPE RFT-OA



- The RFT-OA is made from FRP, this fan is durable to against corrosive gases.
- The RFT-OA is higher efficiency than belt drive.
- If inverter control is used, the rotational speed can be set easily.
- Simple maintenance.
- This design makes this fan highly efficient, and reduces noise.



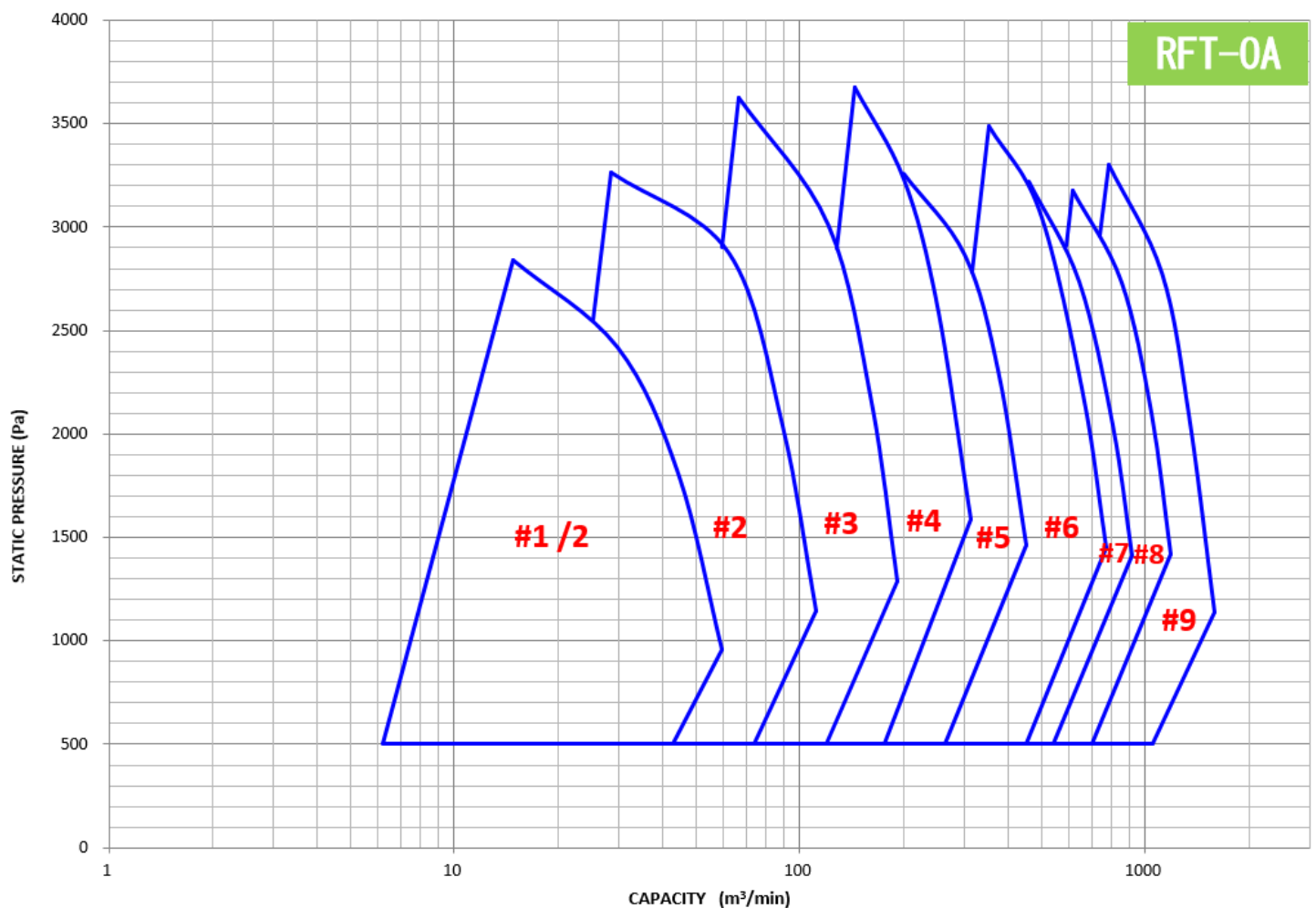
#4~12RFT-RB

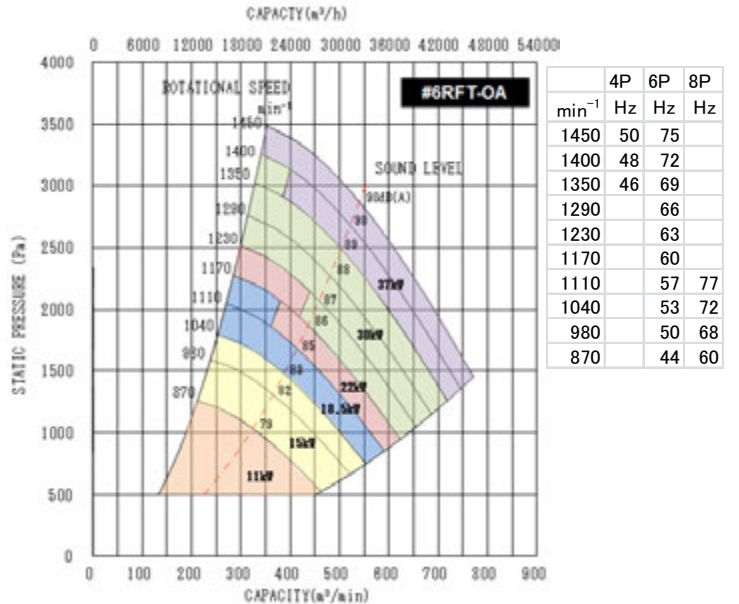
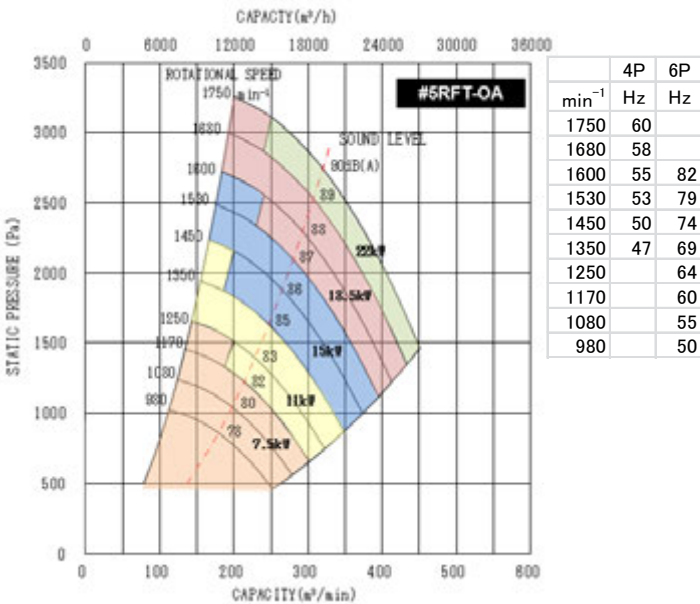
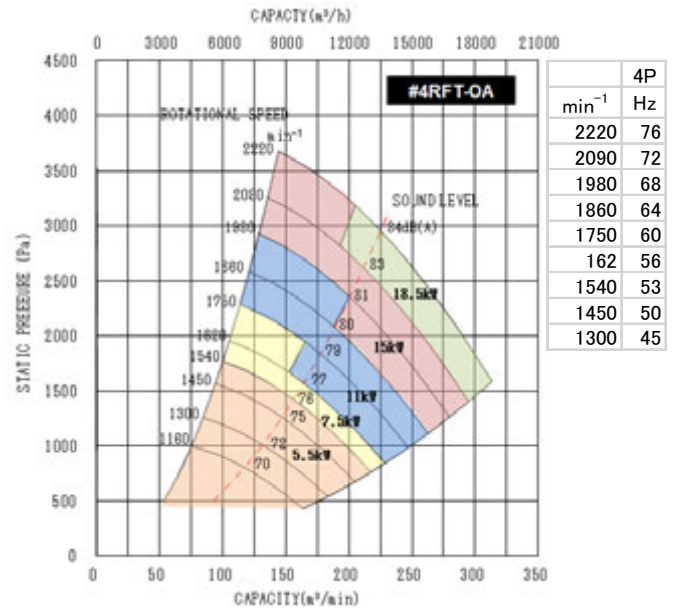
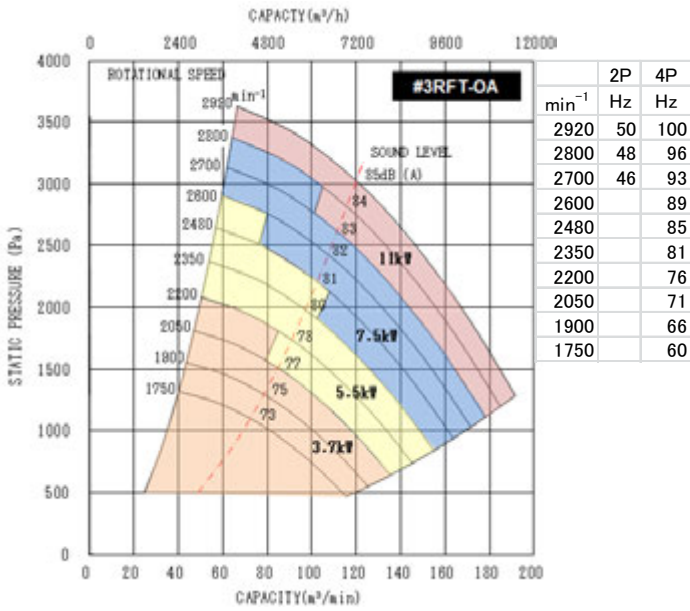
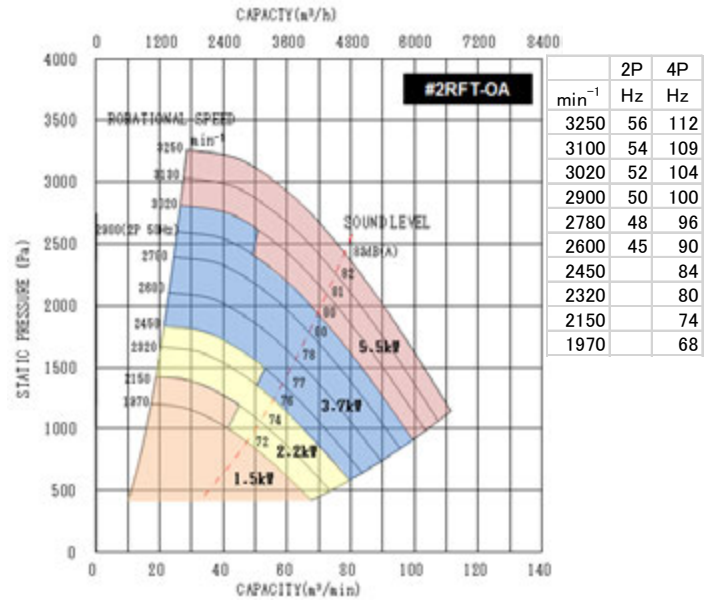
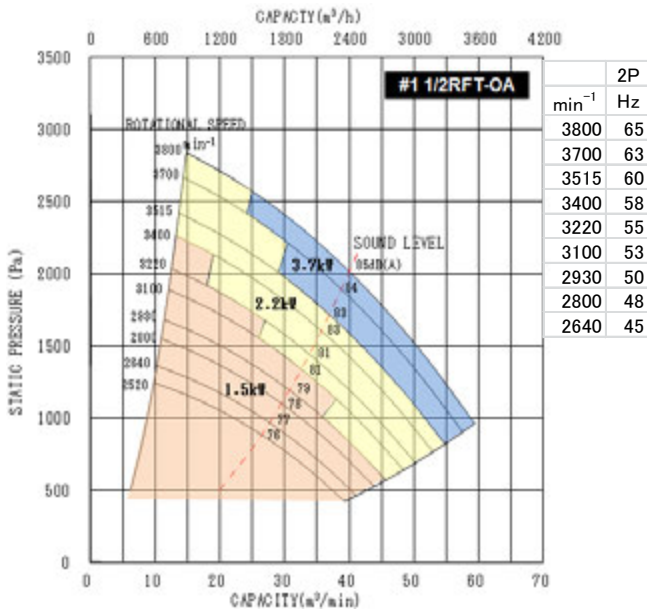
Large size inspection door.

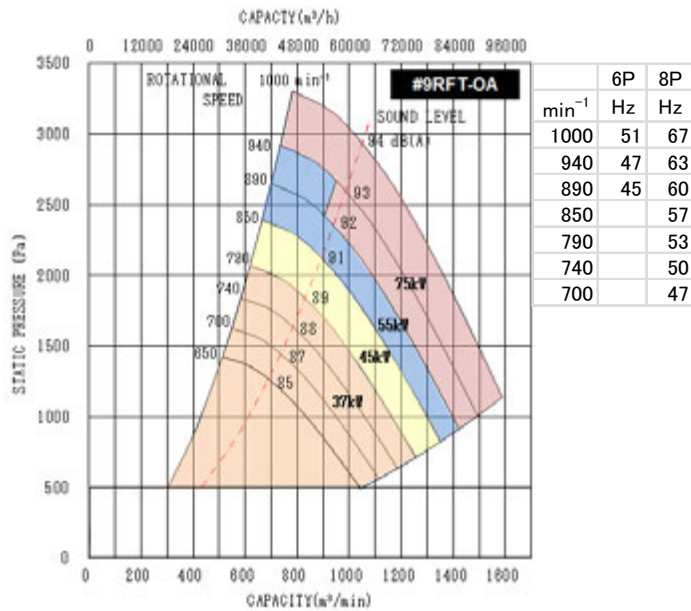
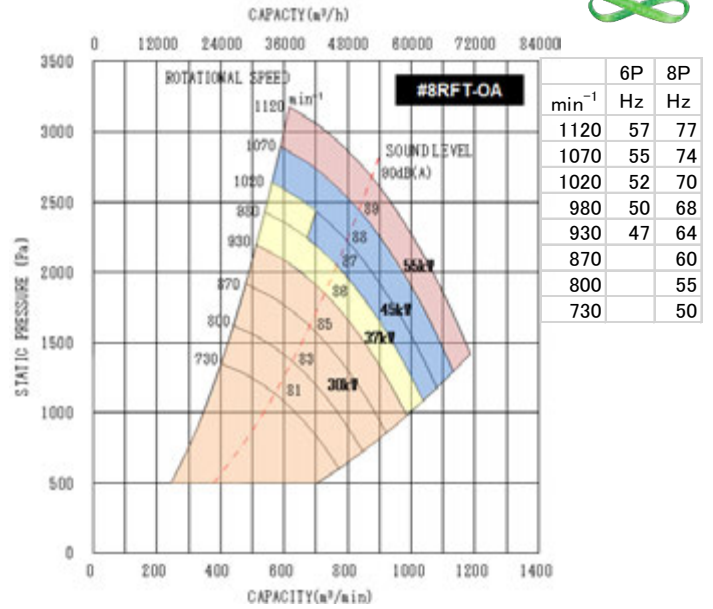
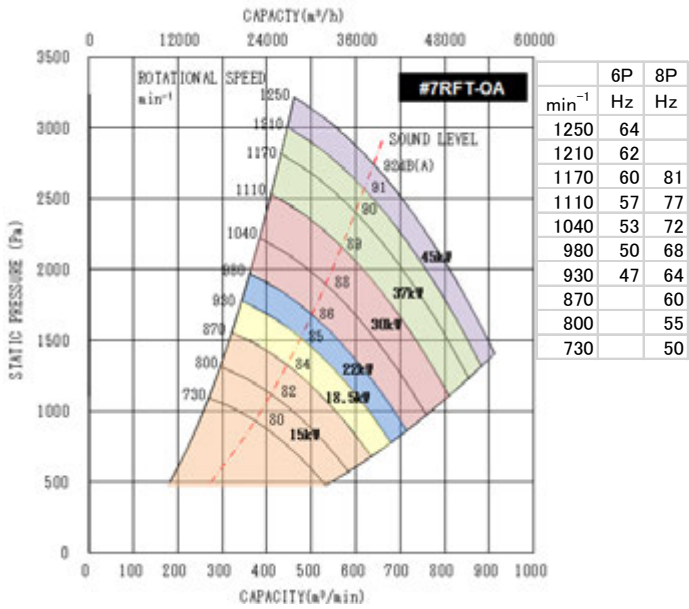
■ SPECIFICATIONS

- ① Centrifugal turbo fan
- ② Suction Gas temperature limits $-10\sim 70^{\circ}\text{C}$
- ③ Shaft seal is gland sheet type

■ PERFORMANCE CURVE

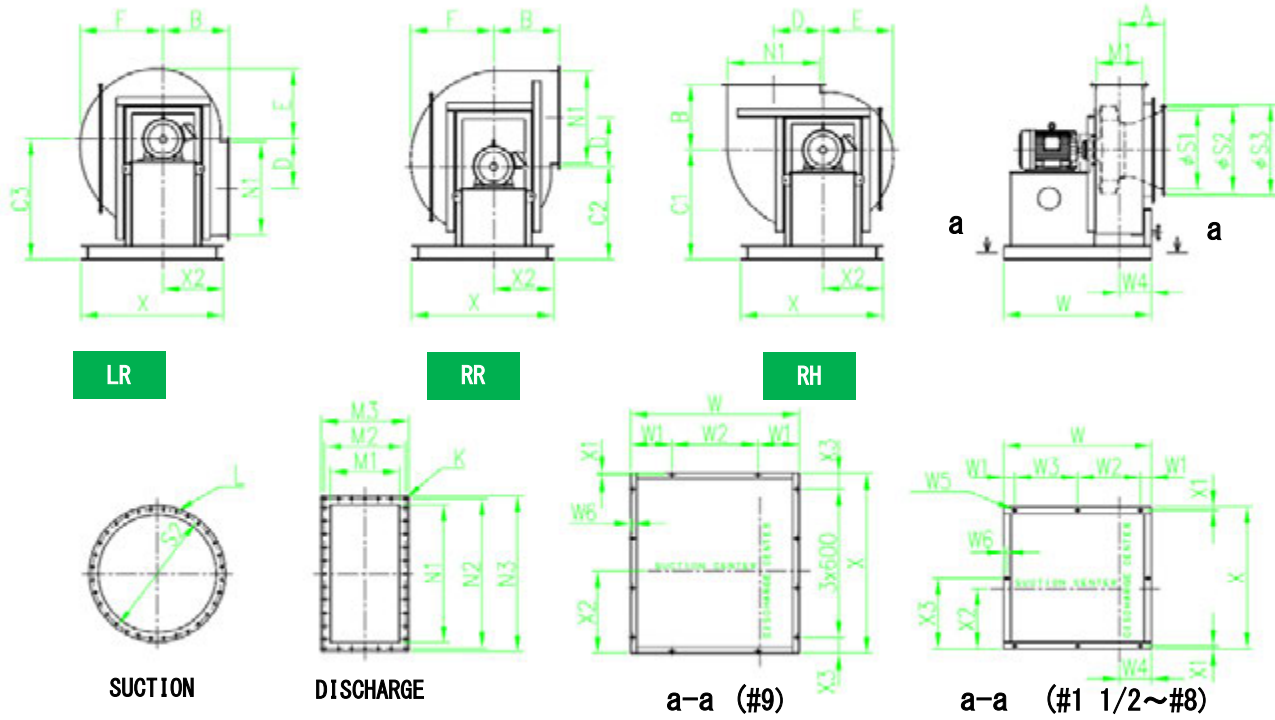








■ DIMENSIONS (RFT-OA)



FAN	MAIN UNIT								SUCTION				DISCHARGE						
	A	B	C1	C2	C3	D	E	F	S1	S2	S3	L	M1	M2	M3	N1	N2	N3	K
#1 1/2RFT-OA	180	250	400	400	400	170	240	260	230	290	320	8-φ10	150	210	240	210	270	300	12-φ10
#2RFT-OA	250	300	480	480	520	235	295	335	320	374	410	12-φ10	220	272	310	270	324	360	16-φ10
#3RFT-OA	250	420	650	600	700	275	410	480	465	520	550	20-φ12	260	320	350	538	600	630	24-φ12
#4RFT-OA	365	475	800	700	900	355	505	595	570	640	680	24-φ15	330	400	440	660	730	770	28-φ15
#5RFT-OA	410	600	1000	850	1100	450	640	760	720	790	830	32-φ15	420	490	530	840	910	950	36-φ15
#6RFT-OA	460	750	1200	1050	1350	565	805	950	900	980	1030	36-φ15	520	600	650	1040	1120	1170	44-φ15
#7RFT-OA	510	840	1350	1200	1500	635	900	1065	1000	1080	1130	40-φ15	580	660	710	1160	1240	1290	48-φ15
#8RFT-OA	565	940	1400	1250	1650	709	1000	1185	1120	1200	1250	52-φ15	650	730	780	1300	1380	1430	52-φ15
#9RFT-OA	625	1050	1600	1400	1850	790	1125	1330	1260	1360	1410	52-φ15	730	830	880	1460	1560	1610	62-φ15

FAN	BASE											WEIGHT (kg)	MOTOR WEIGHT (kg)				
	W	W1	W2	W3	W4	W5	W6	X	X1	X2	X3		kW	2P	4P	6P	8P
#11/2RFT-OA	600	75	450	-	71	4-φ14	-	380	15	190	-	60	0.75	12	16	20	30
#2RFT-OA	700	75	550	-	111	4-φ14	-	480	15	240	-	90	1.5	19	22	33	45
#3RFT-OA	950	100	750	-	195	4-φ19	-	650	20	325	-	170	2.2	23	30	46	63
#4RFT-OA	1100	120	430	430	234	6-φ19	-	850	20	425	-	300	3.7	34	40	60	82
#5RFT-OA	1350	100	575	575	294	6-φ19	-	1300	30	550	-	570	5.5	56	61	75	110
#6RFT-OA	1500	100	650	650	343	8-φ19	30	1600	30	700	800	800	7.5	60	72	98	145
#7RFT-OA	1600	100	700	700	372	8-φ19	30	1800	30	800	900	940	11	93	103	120	170
#8RFT-OA	2000	100	900	900	420	8-φ19	30	2100	30	800	1050	1600	15	105	120	180	220
#9RFT-OA	2050	500	1050	-	475	12-φ26	30	2200	30	1000	200	2300	18.5	120	185	220	270
													22	200	190	230	300
													30	240	240	340	360
													37	330	330	350	-
													45	340	370	420	-
													55	400	430	-	-
													75	-	-	-	-
													90	-	-	-	-



TYPE *NKS II-RB*

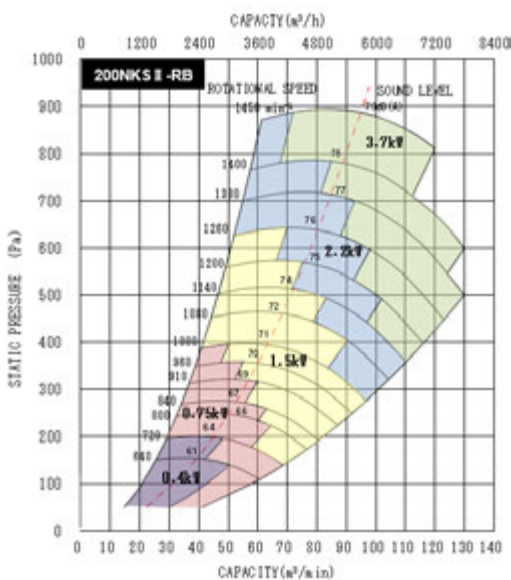
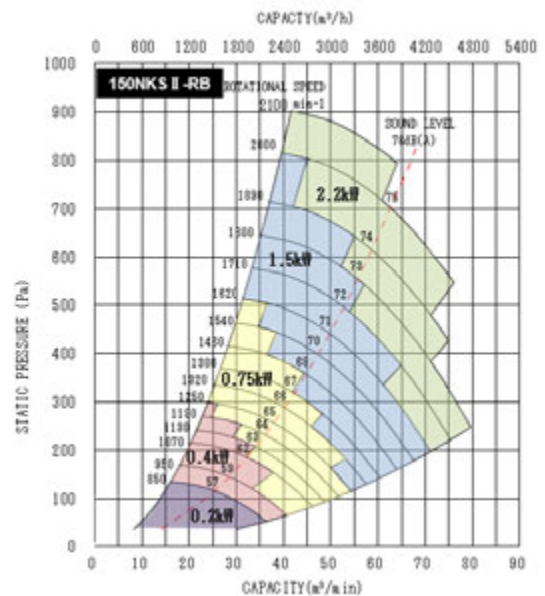
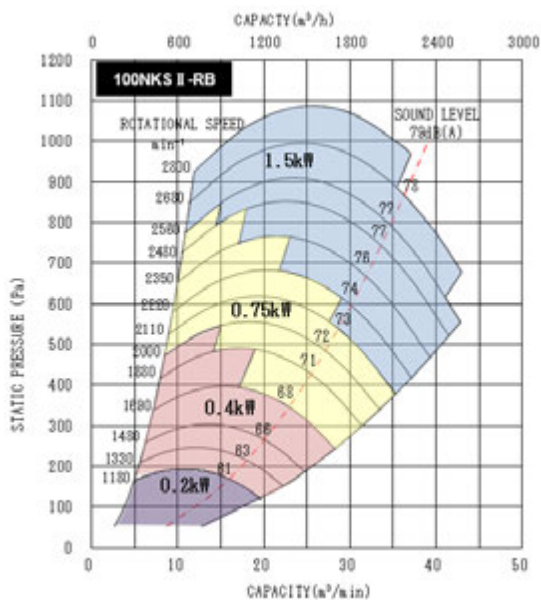


- NKS II -RB is made from injection fabrication FRP, this fan is durable against corrosive gases.
- The NKS II -RB coordinates rotational speed with belt drive to adjust required performance, making it economical to operate.
- This design makes this fan highly efficient, and reduces noise.

■ SPECIFICATIONS

- ① Centrifugal multiblade fan
- ② Suction Gas temperature limits $-10\sim 60^{\circ}\text{C}$
- ③ Shaft seal is gland sheet type

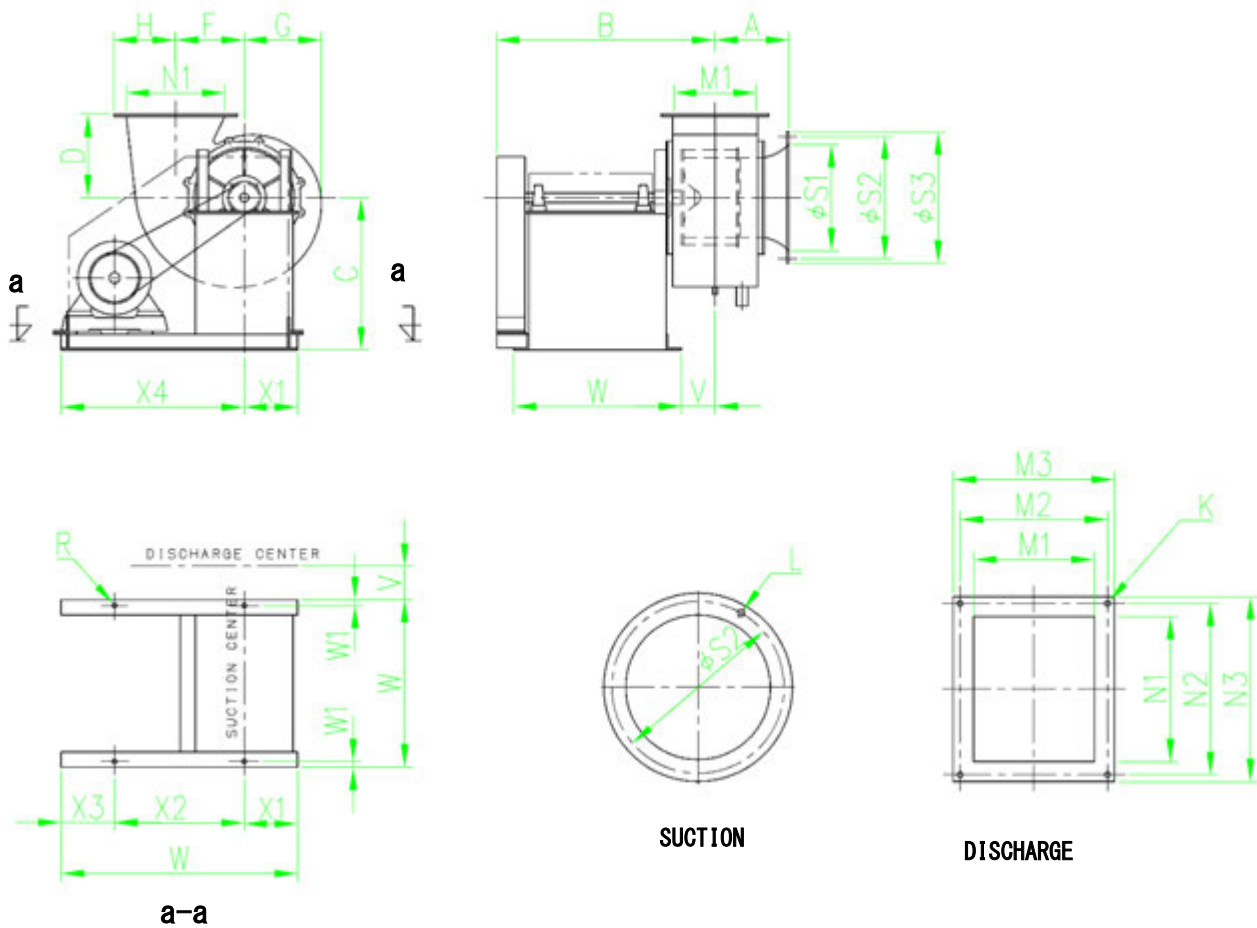
■ PERFORMANCE CURVE



WITH VENTILATOR
(OPTION)



■ DIMENSIONS (NKS II -RB)



FAN	MAIN UNIT								DISCHARGE						
	A	B	C	D	F	G	H	V	M1	M2	M3	N1	N2	N3	K
100NKS II -RB	158	520	300	190	130	170	122.5	71	162	3xP68=204	228	180	3xP74=222	245	12-φ10
150NKS II -RB	194	580	400	220	180	210	162	88	216	3xP86=258	282	258	4xP75=300	324	14-φ10
200NKS II -RB	238	730	500	320	200	277	205	107	275	3xP65=325	355	324	5xP76=380	410	20-φ12

FAN	SUCTION				BASE								WEIGHT
	S1	S2	S3	L	W	W1	X	X1	X2	X3	X4	R	(kg)
100NKS II -RB	211	251	275	12-φ10	390	12	550	120	305	125	430	4-φ12	27
150NKS II -RB	280	321	345	12-φ10	440	15	620	140	340	140	480	4-φ12	36
200NKS II -RB	370	425	455	16-φ12	550	20	745	180	415	150	565	4-φ14	64

	MOTOR WEIGHT(kg)
0.4kW-4P	10
0.75kW-4P	18
1.5kW-4P	25
2.2kW-4P	33
3.7kW-4P	45



TYPE NKS II-O

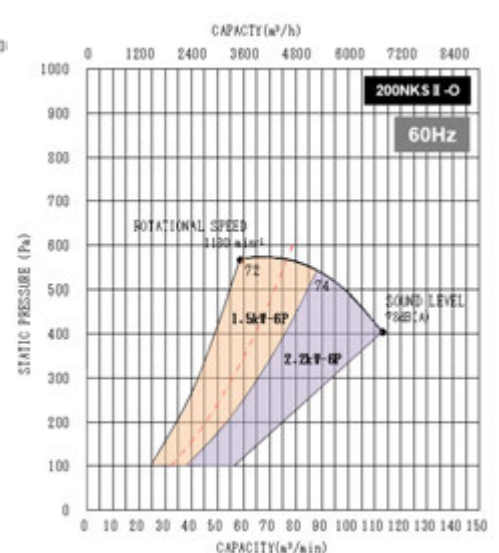
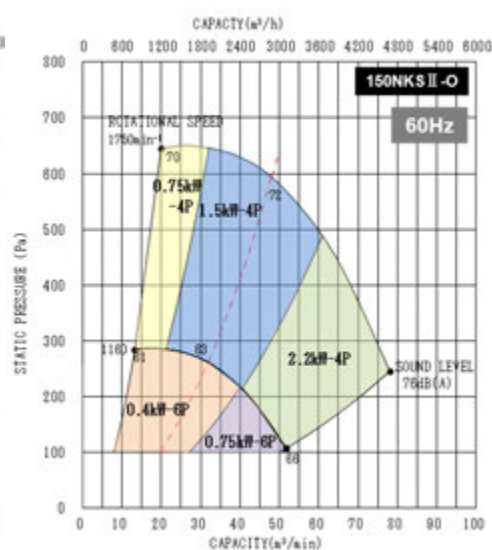
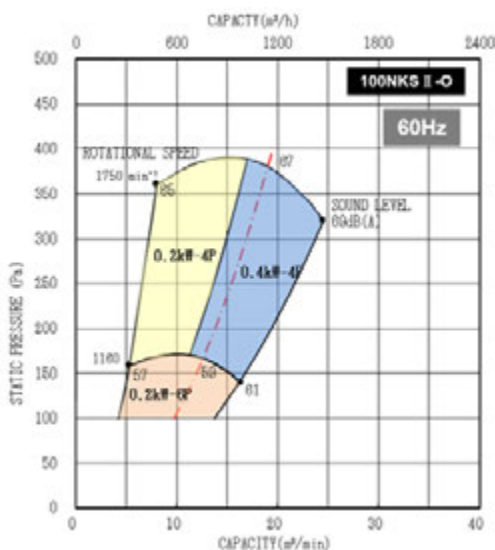
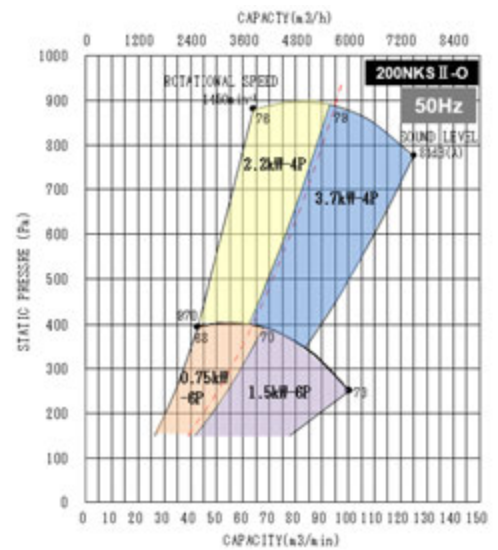
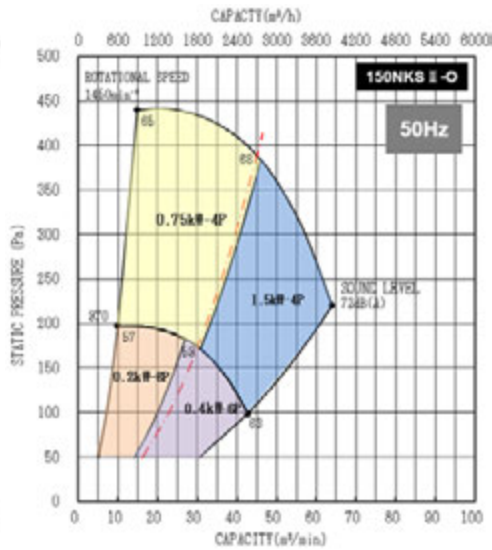
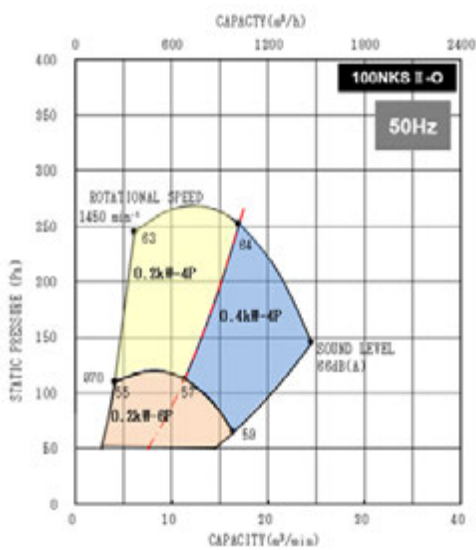


- NKS II-O is made from injection fabrication FRP, this fan is durable against corrosive gases.
- The NKS II-O is high efficiency than belt drive.
- If inverter control is used, the rotational speed can be set easily.
- Since consumables are only a motor, maintenance is easy.
- This design makes this fan highly efficient, and reduces noise.

SPECIFICATIONS

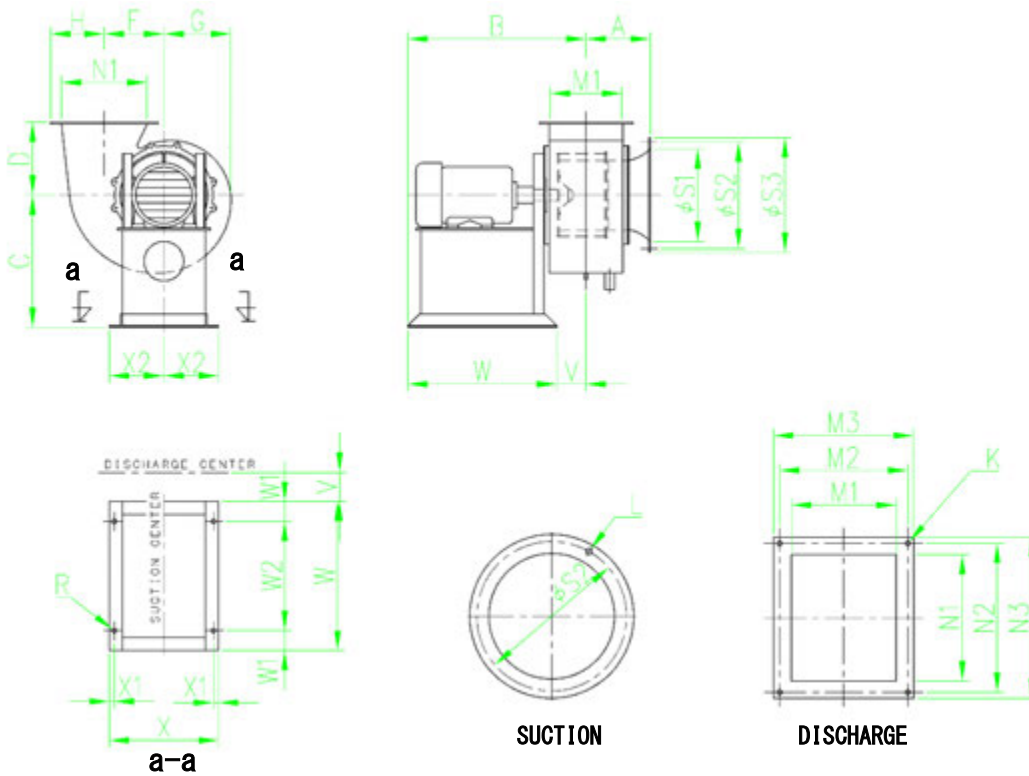
- ① Centrifugal multiblade fan
- ② Suction Gas temperature limits $-10\sim 60^{\circ}\text{C}$
- ③ Shaft seal is gland sheet type

PERFORMANCE CURVE





■ DIMENSIONS (NKS II-O)



	MAIN UNIT								DISCHARGE						
	A	B	C	D	F	G	H	V	M1	M2	M3	N1	N2	N3	K
100NKS II-O	158	401	300	190	130	170	122.5	71	162	3xP68=204	228	180	3xP74=222	245	12- ϕ 10
150NKS II-O	194	538	400	220	180	210	162	88	216	3xP86=258	282	258	4xP75=300	324	14- ϕ 10
200NKS II-O	238	707	500	320	200	277	205	107	275	3xP65=325	355	324	5xP76=380	410	20- ϕ 12

	SUCTION				BASE								WEIGHT
	S1	S2	S3	L	W	W1	W2	X	X1	X2	R	(kg)	
100NKS II-O	211	251	275	12- ϕ 10	330	50	230	275	12	137.5	4- ϕ 12	14	
150NKS II-O	280	321	345	12- ϕ 10	450	60	330	330	15	165	4- ϕ 12	23	
200NKS II-O	370	425	455	16- ϕ 12	600	120	360	380	20	190	4- ϕ 14	45	

KW	MOTOR WEIGHT (kg)	
	4P	6P
0.4kW	7	13
0.75kW	16	20
1.5kW	22	33
2.2kW	30	46
3.7kW	40	60



TYPE VO series

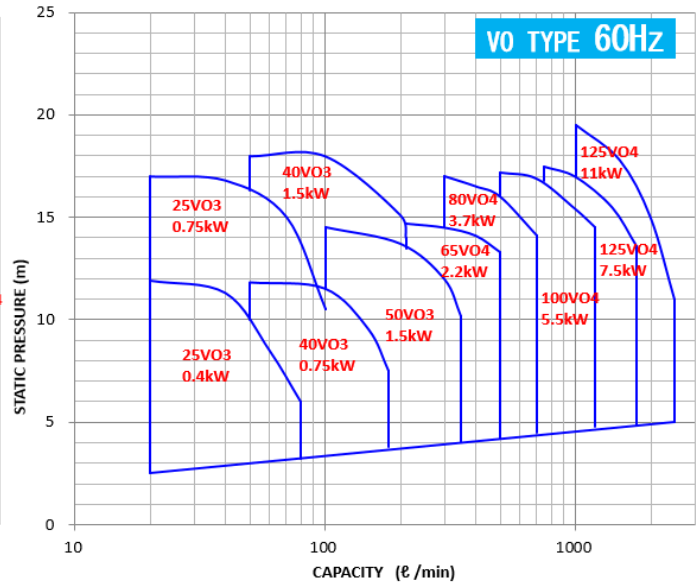
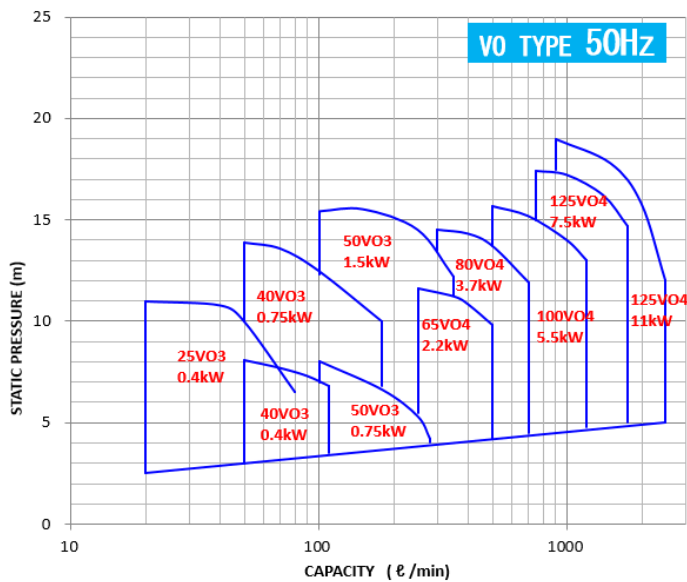


- This pump is made from PVC, durable to corrosive liquid.
- Maintenance is easy.

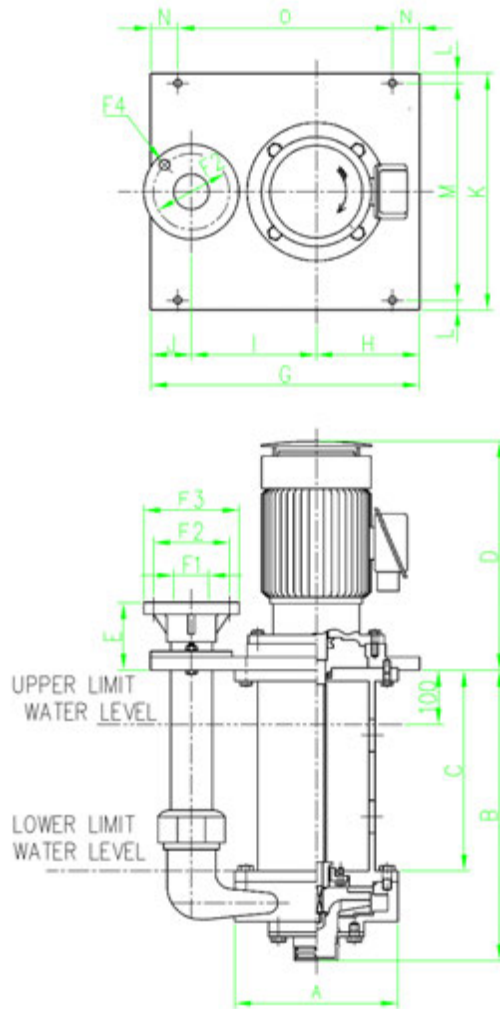
■ SPECIFICATIONS

- ① SIZE $\phi 25$ $\phi 40$ $\phi 50$ $\phi 65$ $\phi 80$ $\phi 100$ $\phi 125$
- ② Suction temperature limits 0~40°C

■ PERFORMANCE CURVE



■ DIMENSIONS (VO series)



	A	B	C	D	E	F1	F2	F3	F4	G	H	I	J	K	L	M	N	O	WEIGHT
25VO3 0.4kW	186	461	293	308	120	25	90	125	4-φ 19	420	150	190	80	370	18	334	50	320	35kg
				327															36kg
40VO3 0.4kW	206	464	290	308	120	40	105	140	4-φ 19	420	150	190	80	370	18	334	50	320	36kg
				327															37kg
				394															50kg
50VO3 0.75kW	232	466	285	327	120	50	120	155	4-φ 19	420	150	190	80	370	18	344	50	320	37kg
				394															50kg
65VO4 2.2kW	300	535	370	391	125	65	140	175	4-φ 19	495	190	230	75	436	18	400	50	395	72kg
80VO4 3.7kW	320	535	370	411	125	80	150	185	8-φ 19	495	190	230	75	436	18	400	50	395	90kg
100VO4 5.5kW	390	607	406	451	170	100	175	210	8-φ 19	670	230	320	120	580	30	520	100	470	175kg
125VO4 7.5kW	440	620	402	493	190	125	210	250	8-φ 19	670	230	320	120	580	30	520	100	470	210kg
				592															235kg



CHANGING PACKING MATERIAL



Before



After

CLEANING INTERNAL TANK



Before



After

CLEANING SPRAY NOZZLE



Before



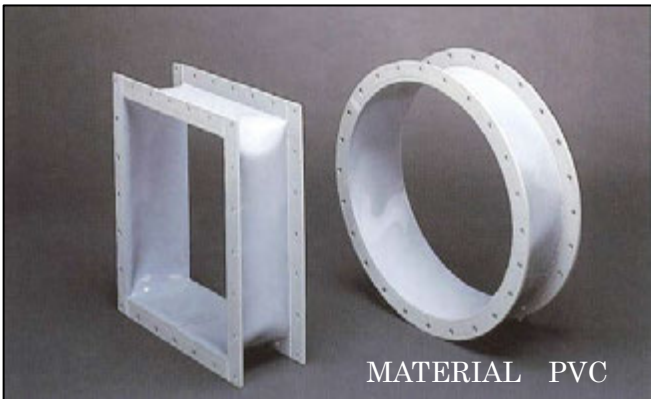
After



SPRING INSULATED BASE (FAN)

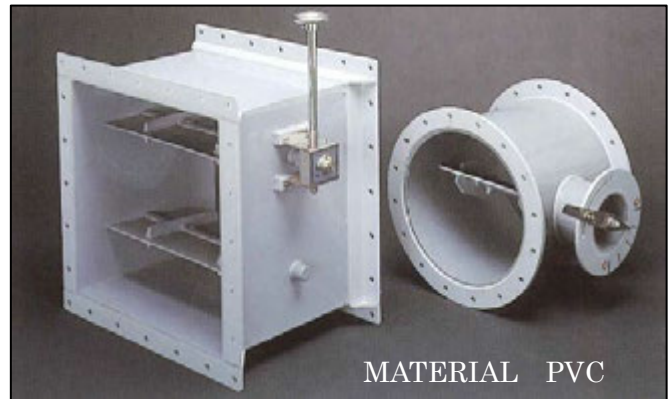


GLAND BYPASS TYPE (FAN)



FLEXIBLE JOINT

MATERIAL PVC

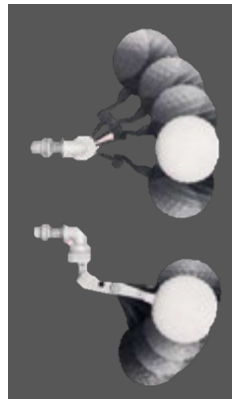


DAMPER

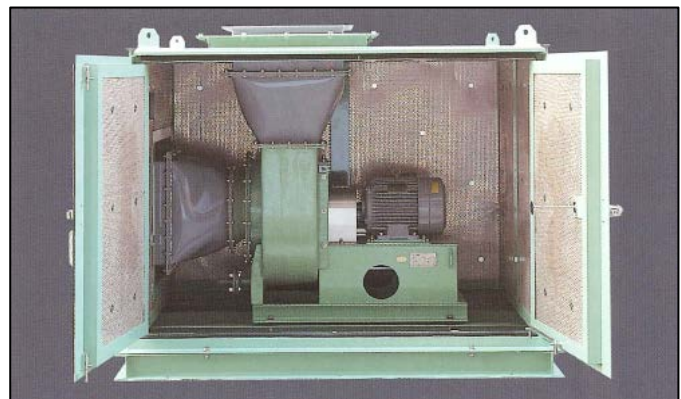
MATERIAL PVC



VENTILATOR
MATERIAL PVC



BALL TAP



SOUNDPROOF BOX



Packing tower
TYPE FSW



Spray tower
TYPE EMR



Deodorization equipment
Activated carbon tower
TYPE MAC



Spray tower
TYPE MEM



Width type Packing tower
TYPE HSD



Lamella scrubber
TYPE EDP



FRP TANK

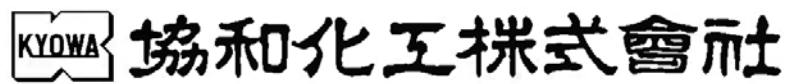


FRP TANK



TYPE FSD II-55





<http://www.kyowakako.co.jp/>

KYOWA KAKO Co., Ltd.

●Head office

Address: 3-20-15 Higashi-ikebukuro, Toshima-ku, Tokyo 170-0013, JAPAN

Phone: +81- (0) 3-3986-6281 (main)

E-mail: kyowa-tokyo@kyowakako.co.jp